

# XWEB EVO

New software version 5.2

PN 08/18 MAY



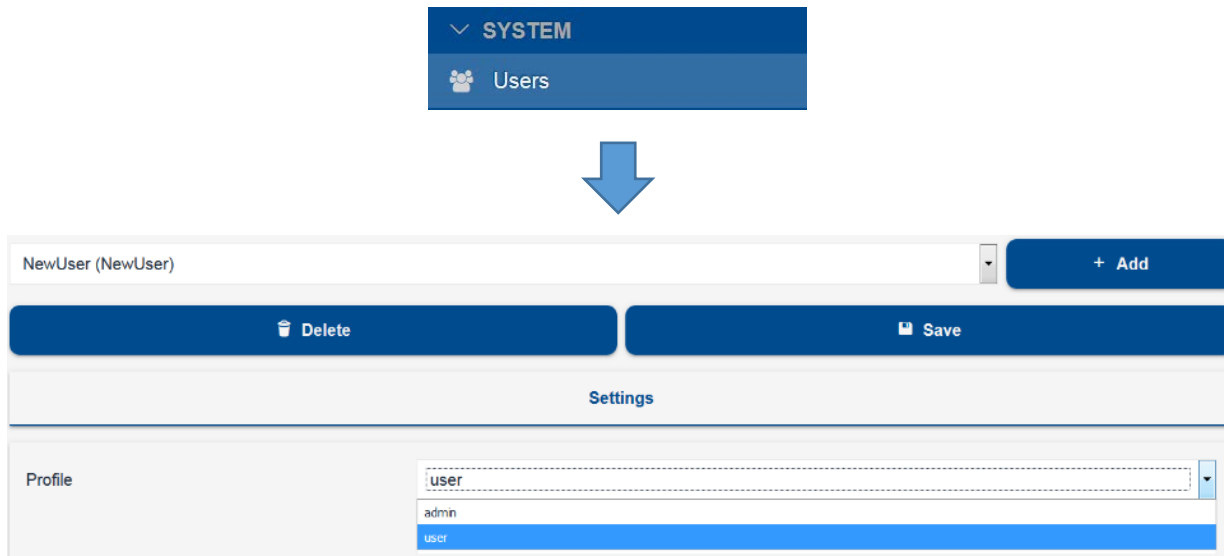
Dear Customer,

The XWEB EVO systems family has been further enhanced with functions specifically dedicated to the end user.

From now on, user management is even simpler and immediate, as is the control of parameter access permissions based on the user.

# 1. New user and profile management

Up to the current version of XWEB EVO, each user had their specific permissions, profiles were used during the creation of new users and changing profile permissions did not affect existing users. With the new software version 5.2, profiles become groups and permissions are managed by group. Now, changing profile permissions extends to all users of that same profile. The following remain specific: language, date format, book data (such as email address and telephone number for sending sms) to which, from today, the parameter of the relative profile has been added.



Updating the software to v. 5.2 will not alter system operation but will update the configuration by creating the necessary profiles.

For example, a configuration made with version 4.3 is converted to version 5.2 as follows:

PROFILES	v. 4.3	<b>Profile</b>	<b>Notes</b>
		admin	system profile
		user	system profile
		profile installer	custom profile; created by the admin; permission "Start/Stop FSM" disabled
	v. 5.2	<b>Profile</b>	<b>Notes</b>
		admin	system profile
		user	system profile
		profile installer	profile with "Start/Stop FSM" permission disabled
		Profile_4	profile with "Send Commands" permission disabled
	Profile_5	profile with "Start/Stop FSM" permission disabled	

v. 4.3

Username	Created from Profile	Notes
Admin	superadmin	system user
UserA	admin	custom user
UserB	admin	custom user
UserC	admin	custom user; "Send Commands" permission disabled
UserInst	profile installer	custom user created by "profile installer" profile
UserD	admin	custom user; "Start/Stop FSM" permission disabled

v. 5.2

Username	Profile	Notes
Admin	superadmin	
UserA	admin	
UserB	admin	
UserC	Profile_4	
UserInst	profile installer	
UserD	Profile_5	

## 2. Controller parameter visibility and editability management

Maximum level parameters are managed in the configuration of each profile: visibility and editability.

Visibility: permission to read the parameter value.

Editability: permission to edit the parameter value.

The following are the available parameters:

- **Edit Parameters Visibility:** allows to set the value of the visibility parameter and is present in the instrument. The maximum settable value will depend on the instrument and on its "Parameters Visibility Level".
- **Edit Parameters Editability:** manages the value of the editability parameter for the controllers that use this function (for example ICHILL) and is present on the instrument. The maximum settable value will depend on the instrument and on its "Parameters Visibility Level".
- **Parameters Visibility Level:** it is present in the XWEB EVO system and can be set between Pr0 and Pr9. The value identifies the maximum visibility/editability level of the parameters.

Example:

- Admin User: "Parameters Visibility Level" = Pr9.  
Reading the parameters from the XR170C instrument, these are presented to the user as shown below. The user sees all the parameters and can set their visibility between Pr1 and Pr2 (the only options managed by the regulator). On this controller it is not possible to manage editability, therefore all accessible parameters are always editable.

Regulation											
<input type="checkbox"/>	0	Hy	Differential	0.1	25.5	10.1		°C	Pr2	Always	
<input type="checkbox"/>	1	LS	Minimum set-point	-50.0	3.0	-30		°C	Pr1 Pr2	Always	
<input type="checkbox"/>	2	US	Maximum set point	3.0	150.0	15		°C	Pr2	Always	
<input type="checkbox"/>	3	odS	Output delay at power on	0	255	1		min	Pr2	Always	
<input type="checkbox"/>	4	Ac	Anti-short cycle delay	0	30	0		min	Pr1	Always	
<input type="checkbox"/>	5	cct	Fast freezing duration			00:10			Pr2	Always	
<input type="checkbox"/>	6	con	Compressor ON with faulty probe	0	255	15		min	Pr2	Always	
<input type="checkbox"/>	7	coF	Compressor OFF with faulty probe	0	255	30		min	Pr2	Always	
<input type="checkbox"/>	8	cF	Measuring unit			°C			Pr2	Always	
<input type="checkbox"/>	9	rFS	Resolution			4F			Pr1	Always	

- User Pr1: “Parameters Visibility Level” = Pr1.  
Reading the parameters from the same instrument, these are presented to the user as shown below. The user sees all parameters up to Pr1.

ID	Label	Description	Min	Max	Value	Unit of Measure	Visibility	Editability
Regulation								
0	Ac	Anti-short cycle delay	0	30	0	min	Pr1	Always
1	rES	Resolution			dE		Pr1	Always
12	Set	Set point	-50.0	150.0	3	°C	Always	Always

### 3. Setting new password on first access

On first access, for security reasons, XWEB EVO will ask you to enter a new password.

### 4. Configuration “Landing pages”

In the user permissions it is now possible to set with the parameter:

“**Default Desktop**” → the desktop to which every user will have access immediately after logging in and with the parameter; “**Dashboard Default View**” → which view to present when accessing the Dashboard.

Default Desktop	Dashboard
Dashboard Default View	Active Alarms

The potential “Default Desktop” choices are

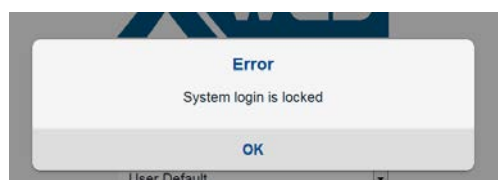
- Dashboard (default)
- Devices
- Alarms
- Reports
- Charts
- Consumption Analyzer
- Performance
- Communication Statistics
- Global Commands
- Layout Pages (only for models 500, 3000 and 5000)

The potential “Dashboard Default View” choices are

- Active Alarms (default)
- Blocks
- Bricks
- List

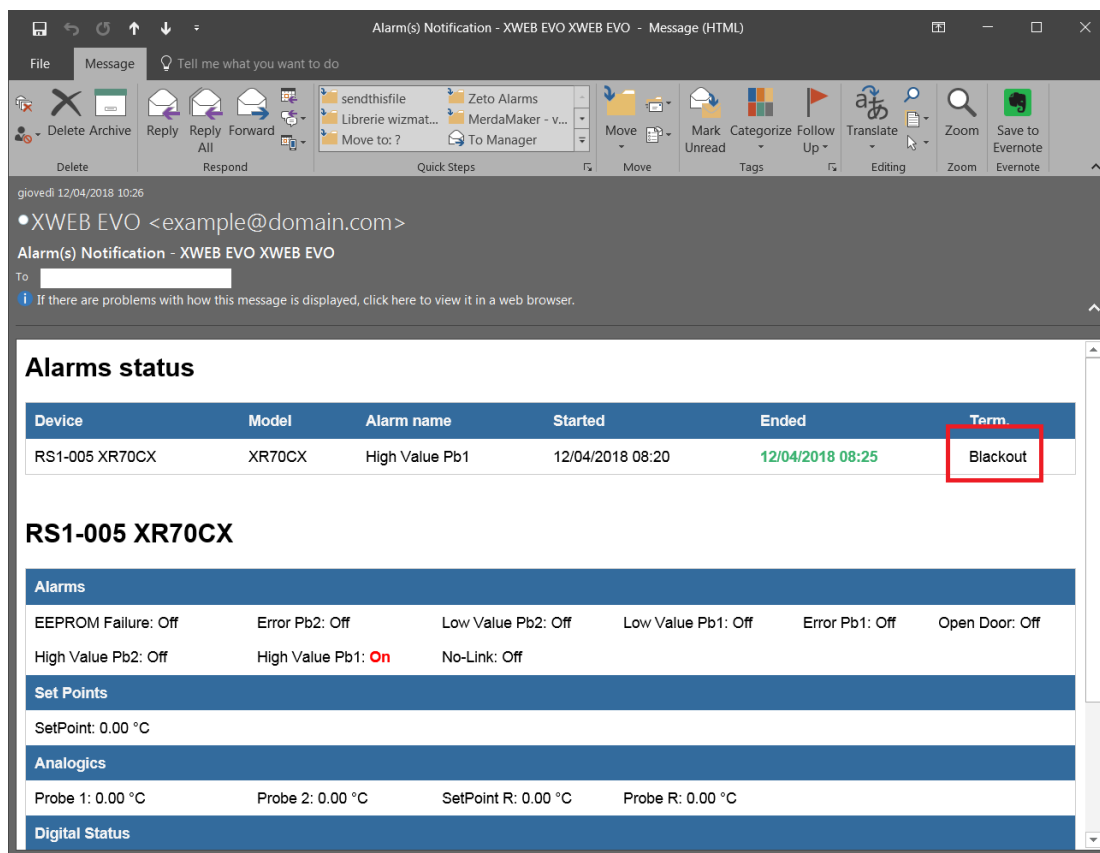
### 5. Temporary block of user access

Each user is temporarily blocked for 5 minutes if they failed to enter the login password 5 times in the previous 5 minutes. During the account lockout period the login page displays login error.



## 6. Extensions to the alarm end notification

The alarm end notification now also occurs for the case in which a stop acquisition is carried out or the alarm configuration is changed. It also triggers after restarting the machine whether this has been forced by user operations or by a momentary blackout.



These e-mails are added and do not replace the one that XWEB EVO sends on reset, regardless of the previous presence of alarms or not.

## 7. Second IP on the network board for XWEB300/500

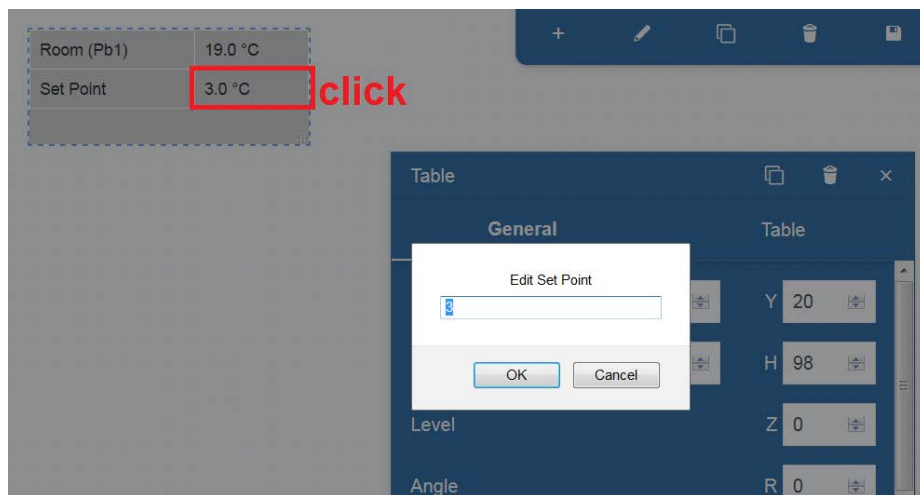
The same ETH0 network board (only one in the XWEB300 and XWB500 models) can manage an IP for connection to the company/store network and another IP for point-to-point connectivity. This second IP is useful in case you want to access the XWEB for local service operations.

<b>ETH 0 (IP 1)</b>	
IPv4 DHCP Client	<input type="checkbox"/>
IPv4 IP Address	10.100.81.60
IPv4 Subnet Mask	255.255.255.0
IPv4 Gateway	10.100.81.1
IPv4 ARP	<input type="checkbox"/>
IPv4 ARP Interval	15 Minutes
IPv4 ARP Count	3
<b>ETH 0 (IP 2)</b>	
IPv4 DHCP Client	<input type="checkbox"/>
IPv4 IP Address	192.168.0.150
IPv4 Subnet Mask	255.255.255.0

The first IP, additionally, now manages a periodic and scheduled sending of ARP packs with the machine on in order to force updates of the company/store network. The ARP packs update the routing tables by associating the MAC address of the XWEB device to its IP.

## 8. Layout function and Widget Table

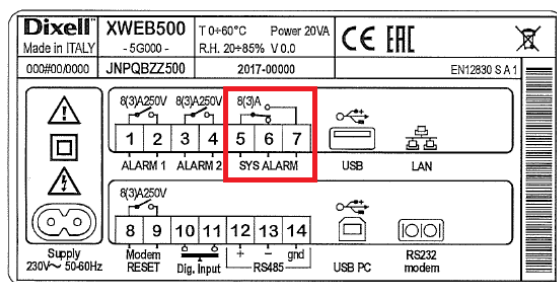
With the new 5.2 version, for XWEB EVO with the Layout function, the user can change the setpoint value by using the Widget Table (see image below) without having to access the "Devices/Devices" desktop. The command sending mode has not changed with the new version.



## 9. System alarm and configuration relay (only for XWEB500)

The configuration parameter for managing the polarity of the "SYS ALARM" relay located in SYSTEM→SETTINGS→INPUTS / OUTPUTS, has been added in v.5.2.

If the instrument is ON and no alarms are present, by enabling this parameter (default) the relay will close between terminals 5 and 6.



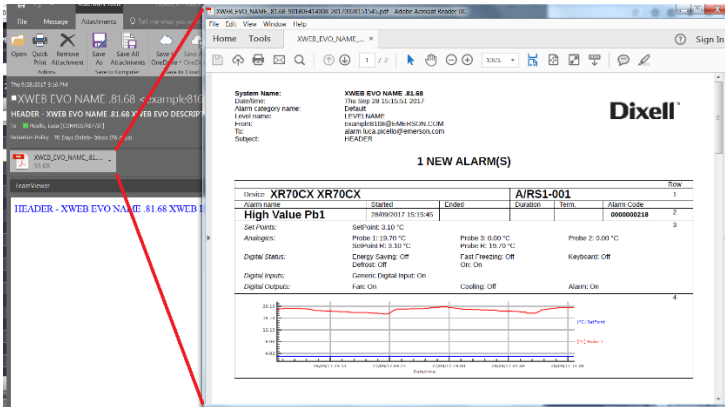
If the parameter is set as disabled, when the instrument is ON and no alarms are present, the relay will close between terminals 5 and 7.



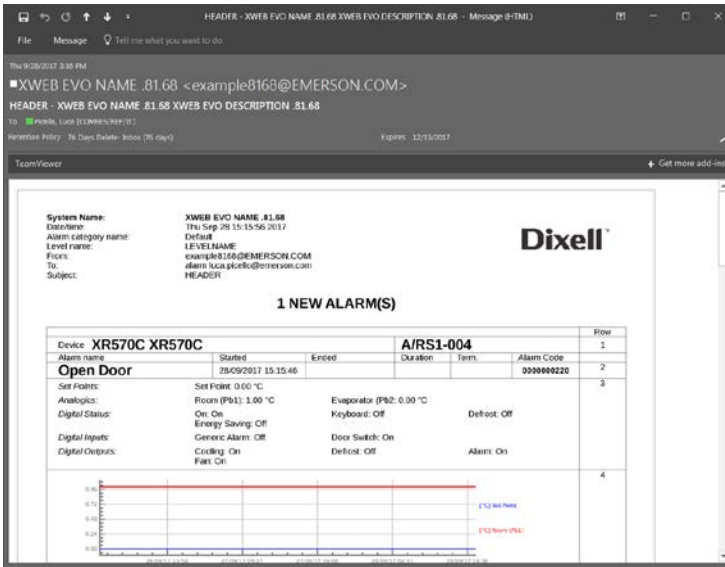
# 10. Alarm notification via email

The alarm and system notifications from scheduler via email, with version 5.2 will no longer be available as pdf and image but rather as HTML.

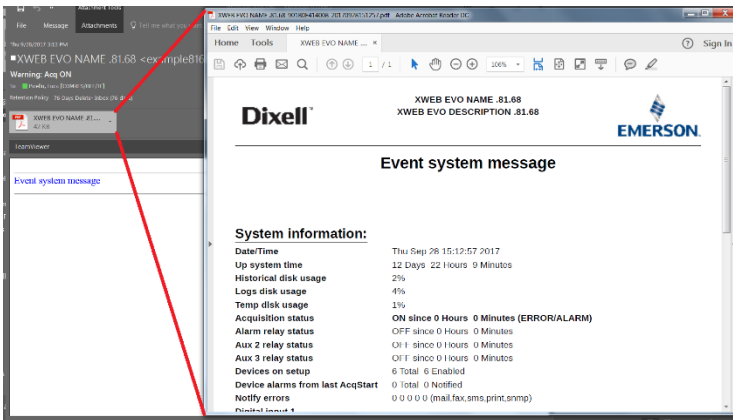
Reports and events configured as "Printing Event" in the Scheduler instrument will continue to support the PDF format.



ALARM NOTIFICATION WITH PDF NO LONGER AVAILABLE



ALARM NOTIFICATION WITH IMAGE NO LONGER AVAILABLE



ALARM NOTIFICATION/SYSTEM EVENT NO LONGER AVAILABLE



Food Quality Report  
Date: 27-04-2017

Food quality report: ██████████ - Yesterday

Ad.	Name	Unit	06:00	01:00	02:00	03:00	04:00	05:00	06:00	07:00	08:00	09:00	10:00	11:00	12:00	13:00	14:00	15:00	16:00	17:00	18:00	19:00	20:00	21:00	22:00	23:00	Max	Min		
ZSMET 1																														
RS1-001	Freezer Food 1	°C	-24	-24	-25	-24	-24	-24	-24	-23	-23	-23	-23	-23	-23	-23	-23	-23	-23	-23	-23	-23	-23	-23	-23	-23	00:00 -23.9	08:20 -27.7		
RS1-002	Freezer Food 2	°C	-24	-24	-24	-24	-24	-24	-24	-24	-24	-24	-24	-24	-24	-24	-24	-24	-24	-24	-24	-24	-24	-24	-24	-24	22:30 -23.2	05:40 -26.3		
RS1-003	Freezer Food 3	°C	-24	-24	-24	-24	-24	-24	-24	-24	-24	-24	-24	-24	-24	-24	-24	-24	-24	-24	-24	-24	-24	-24	-24	-24	22:30 -23.2	05:40 -26.3		
ZONE NT																														
RS1-004	Web 1	°C	0.8	0.8	1.4	0.4	2.8	2.8	0.5	0.1	0.1	0.1	0.3	0.1	0.1	0.1	0.1	0.1	0.1	0.1	0.1	0.1	0.1	0.1	0.1	0.1	0.1	0.1	0.1	
RS1-005	Web 2	°C	1.2	1.2	1.2	1.8	1.8	1.1	0.8	0.1	0.8	0.2	1.4	0.8	0.7	0.8	0.8	0.8	0.8	0.8	0.8	0.8	0.8	0.8	0.8	0.8	0.8	0.8	0.8	
RS1-006	Web 3	°C	1.1	1.1	0.3	0.1	0.4	0.4	0.4	0.4	0.4	0.4	0.4	0.4	0.4	0.4	0.4	0.4	0.4	0.4	0.4	0.4	0.4	0.4	0.4	0.4	0.4	0.4	0.4	
RS1-007	Web 4	°C	0.6	0.6	0.5	0.7	0.8	0.8	0.7	0.4	0.4	0.3	0.7	0.7	0.8	0.8	0.8	0.8	0.8	0.8	0.8	0.8	0.8	0.8	0.8	0.8	0.8	0.8	0.8	
RS1-008	Web 5	°C	1.1	1.1	0.8	0.8	0.8	0.8	0.8	0.8	0.8	0.8	0.8	0.8	0.8	0.8	0.8	0.8	0.8	0.8	0.8	0.8	0.8	0.8	0.8	0.8	0.8	0.8	0.8	
RS1-009	Web 6	°C	0.6	0.7	1.1	2.5	1.8	2.2	2.6	2.8	2.8	2.8	2.7	2.1	2.4	2.4	2.4	2.7	2.7	2.7	2.7	2.7	2.7	2.7	2.7	2.7	2.7	2.7	2.7	
RS1-010	Web 7	°C	0.5	0.5	0.1	0.2	0.4	0.4	0.4	0.4	0.4	0.4	0.4	0.4	0.4	0.4	0.4	0.4	0.4	0.4	0.4	0.4	0.4	0.4	0.4	0.4	0.4	0.4	0.4	
RS1-011	Web 8	°C	0.5	0.5	0.5	0.5	0.5	0.5	0.5	0.5	0.5	0.5	0.5	0.5	0.5	0.5	0.5	0.5	0.5	0.5	0.5	0.5	0.5	0.5	0.5	0.5	0.5	0.5	0.5	
RS1-012	Gateway 1	°C	5.0	5.0	3.5	5.0	5.0	5.0	4.8	4.8	4.8	4.7	4.7	4.7	4.7	4.7	4.7	4.7	4.7	4.7	4.7	4.7	4.7	4.7	4.7	4.7	4.7	4.7	4.7	
RS1-013	Gateway 2	°C	2.8	3.0	1.1	3.4	3.3	3.2	3.3	3.7	3.8	3.5	3.2	3.1	3.1	3.1	3.1	3.1	3.1	3.1	3.1	3.1	3.1	3.1	3.1	3.1	3.1	3.1	3.1	3.1
RS1-014	Gate temp 1	°C	0.1	0.1	0.1	0.1	0.3	0.3	0.3	0.1	0.1	0.1	0.1	0.1	0.1	0.1	0.1	0.1	0.1	0.1	0.1	0.1	0.1	0.1	0.1	0.1	0.1	0.1	0.1	
RS1-015	Gate temp 2	°C	0.1	0.1	0.1	0.1	0.3	0.3	0.3	0.1	0.1	0.1	0.1	0.1	0.1	0.1	0.1	0.1	0.1	0.1	0.1	0.1	0.1	0.1	0.1	0.1	0.1	0.1	0.1	
RS1-016	Mail	°C	1.0	0.8	0.8	1.2	1.2	1.1	1.1	1.3	1.4	1.4	1.4	1.2	1.2	1.2	1.2	1.2	1.2	1.2	1.2	1.2	1.2	1.2	1.2	1.2	1.2	1.2	1.2	1.2
RS1-017	Mail Temp 1	°C	-1.1	-0.8	-0.8	-1.1	-0.9	-1.0	-1.0	-1.0	-1.0	-1.0	-1.0	-1.0	-1.0	-1.0	-1.0	-1.0	-1.0	-1.0	-1.0	-1.0	-1.0	-1.0	-1.0	-1.0	-1.0	-1.0	-1.0	
RS1-018	Mail Temp 2	°C	0.8	0.8	0.8	0.8	0.8	0.8	0.8	0.8	0.8	0.8	0.8	0.8	0.8	0.8	0.8	0.8	0.8	0.8	0.8	0.8	0.8	0.8	0.8	0.8	0.8	0.8	0.8	0.8
RS1-019	Mail Temp 3	°C	1.0	1.0	1.4	1.0	1.0	1.0	1.0	1.4	1.4	1.4	1.4	1.4	1.4	1.4	1.4	1.4	1.4	1.4	1.4	1.4	1.4	1.4	1.4	1.4	1.4	1.4	1.4	
CELLS																														
RS1-020	Web Cell	°C	1.0	1.0	1.2	1.0	1.1	1.1	1.0	1.0	1.0	1.0	1.0	1.0	1.0	1.0	1.0	1.0	1.0	1.0	1.0	1.0	1.0	1.0	1.0	1.0	1.0	1.0	1.0	
RS1-021	Temperature Cell	°C	7.8	8.9	7.3	6.9	7.8	6.8	7.9	8.8	8.8	7.9	7.7	8.1	8.8	7.9	7.7	8.1	8.8	7.9	7.7	8.1	8.8	7.9	7.7	8.1	8.8	7.9	7.7	
RS1-022	Web Cell	°C	0.8	0.1	0.8	0.4	0.4	0.7	0.5	0.1	0.1	0.1	0.1	0.1	0.1	0.1	0.1	0.1	0.1	0.1	0.1	0.1	0.1	0.1	0.1	0.1	0.1	0.1	0.1	
RS1-023	Web Cell	°C	0.8	0.1	0.8	0.7	1.0	1.0	0.5	0.1	0.1	0.1	0.1	0.1	0.1	0.1	0.1	0.1	0.1	0.1	0.1	0.1	0.1	0.1	0.1	0.1	0.1	0.1	0.1	
RS1-024	Freezer Food Cell	°C	-20	-20	-21	-20	-20	-19	-19	-19	-19	-19	-19	-19	-19	-19	-19	-19	-19	-19	-19	-19	-19	-19	-19	-19	-19	-19	-19	
RACKS																														
RS1-025	Rack 1	°C	-18	-18	-18	-18	-18	-18	-18	-18	-18	-18	-18	-18	-18	-18	-18	-18	-18	-18	-18	-18	-18	-18	-18	-18	-18	-18	-18	
RS1-026	Rack 2	°C	-18	-18	-18	-18	-18	-18	-18	-18	-18	-18	-18	-18	-18	-18	-18	-18	-18	-18	-18	-18	-18	-18	-18	-18	-18	-18	-18	

Printed by XWEB EVO  
Generated on: 03-05-2017 12:39

FQR REPORT  
IN PDF  
FORMAT  
  
AVAILABLE

haccp\_20170928164243.pdf - Mozilla Firefox

10.100.81.68/cgi-bin/haccp.cgi/haccp\_20170928164243.pdf?haccp\_20170928164243.pdf&b=1

Export from main archive: XWEB EVO NAME .81.68 - HACCP printout  
date: 28.09.17 time: 16:42 Sampling: 04:00  
HEADER

Legend: \*defrost, !post defrost, SO=System OFF, #=unit OFF, X=offline, S=door open

TIME TABLE:	27/09	27/09	28/09	28/09	28/09	28/09
	20:42	00:42	04:42	08:42	12:42	16:42
RS1-001 XR70CX						
Probe 1	°C	19.66	19.05	18.68	18.16	18.99
High Value Pb1	°C	1.00	1.00	1.00	1.00	1.00
RS1-002 XR170CXXXXXXXXXXXX						
Room (Pb1)	°C	15.90	15.90	15.90	15.90	15.90
High Value Pb1	°C	0.00	0.00	0.00	0.00	0.00
RS1-003 XR170C						
High Value Pb1	°C	0.00	0.00	0.00	0.00	0.00
RS1-004 XR570C						
Room (Pb1)	°C	*1.00	*1.00	*1.00	*1.00	*1.00
High Value Pb1	°C	*0.00	*0.00	*0.00	*0.00	*0.00

HACCP  
REPORT IN  
PDF FORMAT  
  
AVAILABLE

## 11. Other improvements

- Second Ethernet interface configuration (XWEB3000 and XWEB5000 only)
- Added termination info to Alarms Logs
- Added search toolbar to Alarm Logs
- Added export CSV/HTML to Alarm Logs
- Added export CSV/HTML to System Logs
- Added "Connection Lost" message if no update is received for 90 seconds from the system
- Added previous/next buttons on devices page
- Added default page button
- Performance improvements on local interface (XWEB3000 and XWEB5000 only)
- Updated German, Spanish, Turkish and Chinese translations
- Updated Dashboard Blocks, Bricks and List views
- Improvements on Layout conversion from 4.x to 5.x



## 12. Availability and orders

From **June 2018** all XWEB EVO will be delivered with the new software version.

The software update is for all XWEB EVO models and can be applied to machines that are already installed and configured:

- for XWEB300D/500D/500 EVO it will be applied on any software version;
- for XWEB3000/5000 EVO it must be applied on an equal or successive version of the 4.0.5 version. After the update installation, XWEB EVO can optimize the memorized data; during this optimization XWEB EVO is working properly.

For XWEB EVO which already have an internet connection, the update can be installed by accessing on "System Update→Repository".

Files are also available in the private area of the [www.dixell.com](http://www.dixell.com) web site.

The update can be applied on XWEB EVO models only.

After the update from a previous version to the 4.3 version, it can be necessary to check and update the aesthetic of layout desktops.